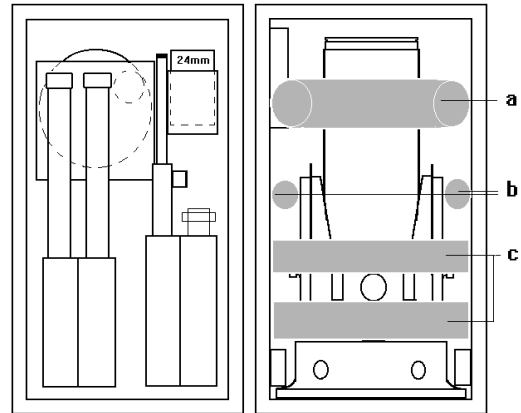
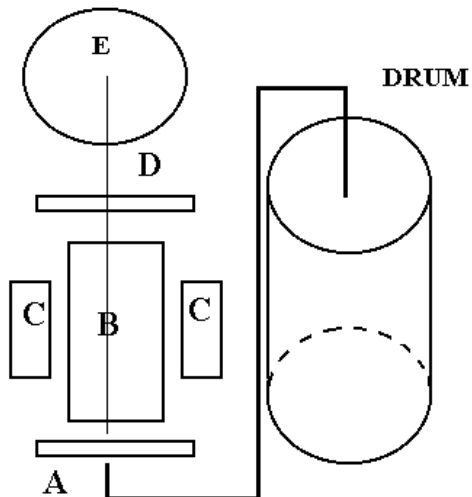
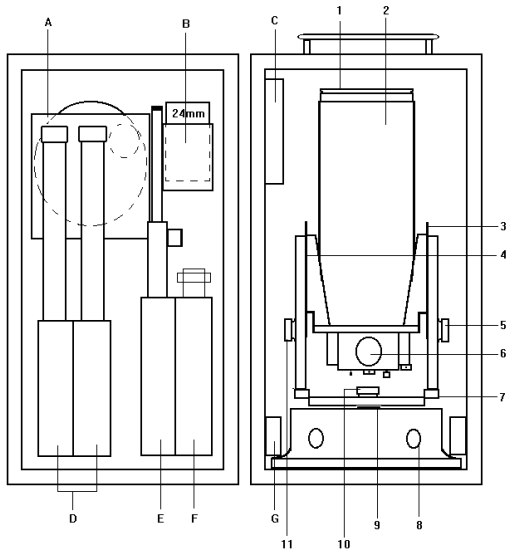


HOW TO PACK INSTRUMENT FOR SHIPPING

- A- SOLAR FILTER POUCH
- B- EYEPIECE POUCH and Keys
- C- POWERGUIDE HAND CONTROL
- D- OUTSIDE LEG POUCH
- E- CENTER LEG POUCH
- F- A/C POWER CORD
- G- BASE ECCENTRIC PRESSURE BUTTON

- 1 LENS CAP
- 2- MOON MAP AND STAR CHART
- 3- ELEVATION DRIVE DISCS
- 4- DECLINATION CIRCLE
- 5- ALTITUDE DRIVE KNOB
- 6- EYEPIECE AND DIOPTER ADAPTER
- 7- TURNTABLE AND SLIP CLUTCH
- 8- LEG HOLE PLUG
- 9- RA INDICATOR AND SETABLE CIRCLE
- 10- RA DRIVE KNOB
- 11- DECLINATION CLAMP KNOB



- a - BARREL RING
- b - SIDEARM ROLL [smaller dia.]
- c - FRONT ROLL [larger dia.]

Packing Instructions:

1. Place barrel ring over telescope tube.
2. Place telescope vertically (90) and lock declination clamp knob to hold in position.
3. Cap all exposed optical surfaces.
4. Remove Powerguide hand control from pouch.
5. Insert telescope in case as illustrated.
6. Rotate eccentric buttons down to secure telescope base against bottom of case. Loosen screws on outside, rotate eccentric then tighten screws.
7. Place sidearm rolls between the case and sidearm as shown above.
8. Rotate eyepiece downward so it does not rub against door. You should not leave the 24mm or 32mm on telescope! They will rub against door.
9. Place the front rolls as shown above.
10. Note items on case door. Place all items as illustrated. If you have a short eyepiece such as 8mm or keys, use a rubber band around pouch to keep from falling out during shipping.
11. Place case in shipping drum as received from factory. Make sure the bottom pad (A) is in drum before inserting case. Place packing (C) around case to keep case in center of drum. Place top pad (D) over case and seal drum with lever ringed lid (E).
12. Return to Questar Corp.
6204 Ingham Road
New Hope, PA 18938